

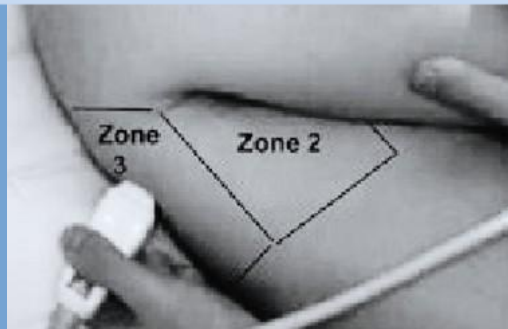
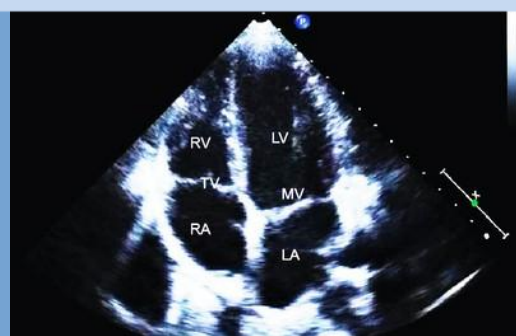
# BESTriCC

BEDSIDE SONOGRAPHY TRAINING IN  
CRITICAL CARE

# B E D S I D E ULTRASON C RITICAL ARE



G  
R  
A  
P  
H  
Y



## THE OBJECTIVE

BE A PART OF THE  
PARADIGM SHIFT WHICH  
HAS REVOLUTIONIZED  
ASSESSMENT, DIAGNOSIS  
AND MANAGEMENT OF THE  
SICK USING ULTRASOUND

## DATE & VENUE

- 14 & 15 th November 2019
- 8:00 AM ONWARDS
- SILVER JUBILEE BLOCK,  
FIRST FLOOR
- DEPT. OF CRITICAL CARE
- ST. JOHN'S HOSPITAL



# WORKSHOP HIGHLIGHTS

- Holistic learning of USG/ECHO to aid with day to day management of critically ill
- Bedside teaching by trained faculty with hands on training
  - Simulation based interactive case scenarios
  - KMC accreditation points- 4 HOURS

## REGISTRATION DETAILS

**NUMBERS STRICTLY LIMITED TO 30**

Amount: STUDENTS- 3540/- | FACULTY- 4720/- (including 18% GST)  
(Students must carry letter from HOD)

## FOR ONLINE REGISTRATION & TRANSACTION DETAILS

Kindly visit [http://www.stjohns.in/about\\_us/Events](http://www.stjohns.in/about_us/Events)

**LAST DATE OF REGISTRATION: 9 th November 2019**

## ACCOMMODATION DETAILS

Accommodations available at ANNEXE III (Kindly pay directly at ANNEXE III)

TARIFFS PER DAY:

Non AC Single Room- 750/- | AC Single Room- 1680/-

Non AC Double Room- 1120/- | AC Double Room- 2240/-

## Contact details

Mrs. Veena Kumari (ICU Secretary)  
1st Floor ICU, Silver jubilee Block  
St. John's Hospital, Sarjapur Road  
Bengaluru- 560 034  
Ph: 080- 2206 5334

Email: [ccm.sjmch@stjohns.in](mailto:ccm.sjmch@stjohns.in)



# DAY 1

BESTriCC DAY 1 (14/11/19)		
TIME	TOPICS	KEY OBJECTIVES
08:30-08:45	Registration	
08:45-09:15 (30mins)	How to get a good image with any machine & any patient?	Basic principles of USG: Understanding your machine- Knobs & Probes
09:15-09:35 (20mins)	What cardiac sonographic examination is possible at every bedspace?	Introduction to Echocardiography- Basic views
09:35- 09:55 (20mins)	Venous USG at point of care	Importance of Venous USG
09:55-10:10	Tea Break	
10:10-10:30 (20mins)	Lung USG in ICU?	Principles of Lung USG
10:30-10:45 (15mins)	FAST & E-FAST	Algorithmic Education
10:45-12:45	Workstation 1	
12:45-13:45	Lunch	
13:45-15:05	USG in Respiratory disease and critically ill	
13:45-14:05 (20 mins)	Alveolar diseases	USG in Pneumonia, ARDS & Pulmonary edema
14:05-14:25 (20 mins)	Pleural & Airway diseases	Pleural effusion, Pneumothorax, COPD & Asthma
14:25-14:45 (20 mins)	Airway USG in Critically ill patients- when and how	Airway USG
14:45-15:05 (20 mins)	How to get a window to brain?	Transcranial doppler
15:05-15:15	Tea Break	
15:15-17:15	Workstation 2	

# DAY 2

BESTriCC DAY 2 (15/11/19)		
TIME	TOPICS	KEY OBJECTIVES
Echocardiography		
08:30-09:00 (30mins)	Doppler Basics	Doppler- Basic principles
09:00-09:25 (25mins)	How is the relaxation of the heart?	Assessment of diastolic function & filling pressures
09:25-09:50 (25mins)	Is the right ventricular function OK?	Techniques of Right ventricular assessment
09:50-10:15 (25mins)	Fluid assessment	Role of USG
10:15-10:25	Tea Break	
10:25-10:50 (25mins)	How is the heart contracting? Part 1	Assessment of Left ventricular systolic function
10:50-11:15 (25mins)	How is the heart contracting? Part 2	Assessment of Left ventricular systolic function
11:15-13:15	Day 2, Workstation 1	
13:15-14:10	Lunch	
14:10-15:30	Day 2, Workstation 2	
Case based learning- Interactive session with SIMULATOR		
15:30-16:15	Case Scenario	
16:15-16:45	Post- test, Feedback and Valedictory	