

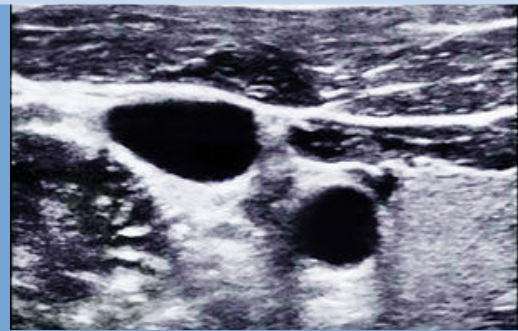
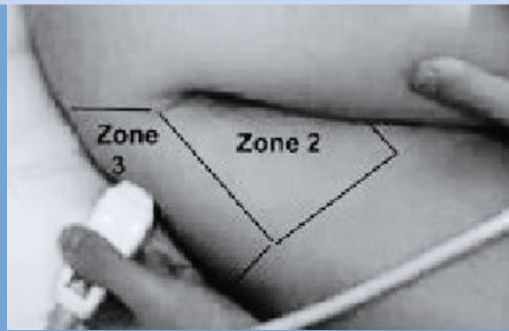
BESTriCC

BEDSIDE SONOGRAPHY TRAINING IN
CRITICAL CARE

B E D S I D E ULTRASON C RITICAL ARE



G
R
A
P
H
Y



THE OBJECTIVE

BE A PART OF THE
PARADIGM SHIFT WHICH HAS
REVOLUTIONIZED
ASSESSMENT, DIAGNOSIS
AND MANAGEMENT OF THE
SICK USING ULTRASOUND

DATE & VENUE

- 16 & 17 NOVEMBER 2018
- 8:00 AM ONWARDS
- SILVER JUBILEE BLOCK,
FIRST FLOOR
- DEPT. OF CRITICAL CARE
- ST. JOHN'S HOSPITAL



WORKSHOP HIGHLIGHTS

- ~ Holistic learning of USG/ECHO to aid with day to day management of critically ill
- ~ Bedside teaching by trained faculty with hands on training
- ~ Simulation based interactive case scenarios
- ~ KMC accreditation points- 4 HOURS

REGISTRATION DETAILS

NUMBERS STRICTLY LIMITED TO 30

Amount: STUDENTS- 3540/- | FACULTY- 4720/- (including 18% GST)
(Students must carry letter from HOD)

FOR ONLINE REGISTRATION & TRANSACTION DETAILS

Kindly follow the link in the website

"KINDLY ENQUIRE ABOUT AVAILABILITY OF SEATS PRIOR TO REGISTRATION"

LAST DATE OF REGISTRATION: 09 NOVEMBER 2018

ACCOMMODATION DETAILS

Accommodations available at ANNEXE III (Kindly pay directly at ANNEXE III)

TARIFFS PER DAY:

Non AC Single Room- 780/- | AC Single Room- 1845/-

Non AC Double Room- 1190/- | AC Double Room- 2465/-

**"KINDLY ENQUIRE ABOUT AVAILABILITY OF SEATS
PRIOR TO REGISTRATION"**

Contact details

Mrs. Veena Kumari (ICU Secretary)
1st Floor ICU, Silver jubilee Block
St. John's Hospital, Sarjapur Road
Bengaluru- 560 034
Ph: 080- 2206 5334

Email: ccmstjohns@gmail.com



DAY 1

BESTriCC DAY 1		
TIME	TOPICS	KEY OBJECTIVES
8:30-8:45	Registration	
08:45-09:00	Introduction to BESTriCC	
09:00-09:30	How to get a good image with any machine & any patient?	Basic principles of USG: Understanding your machine- Knobs & Probes
09:30-09:45	Lung USG in ICU?	History & Principles of Lung USG
09:45-10:00	Venous USG at point of care	Importance of Venous USG
10:00-10:15	Tea Break	
10:15-10:30	What cardiac sonographic examination is possible at every bedspace?	Introduction to Echocardiography- Basic views
10:30-10:45	FAST & E-FAST	Algorithmic Education
11:00-13:00	Workshop 1	
40 mins	Station 1	Know your machine- getting right image
40 mins	Station 2	Lung USG & Compression USG
40 mins	Station 3	Echocardiography- Basic views
13:00-13:45	Lunch	
13:45-14:45	Lung USG in Respiratory disease	
20 mins	Alveolar diseases	USG in Pneumonia, ARDS & Pulmonary edema
20 mins	Pleural & Airway diseases	Pleural effusion, Pneumothorax, COPD & Asthma
20 mins	Sudden worsening in respiratory parameters	Approaching a patient with Acute breathlessness
14:45-15:00	How a CVC is inserted under USG guidance?	Different approaches & positions
15:00-15:15	Tea Break	
15:15-17:15	Workshop 2	
40 mins	Station 1	Lung USG in diseases
40 mins	Station 2	FAST
40 mins	Station 3	Central venous cannulation

DAY 2

BESTriCC DAY 2		
TIME	TOPICS	KEY OBJECTIVES
Echocardiography		
08:30-09:00	How to measure flow & pressures in the heart?	Doppler- Basic principles
09:00-09:20	How is the heart contracting? Part 1	Assessment of Left ventricular systolic function
09:20-09:40	How is the heart contracting? Part 2	Assessment of Left ventricular systolic function
09:40-10:00	How is the relaxation of the heart?	Assessment of diastolic function & filling pressures
10:00-10:15	Tea Break	
10:15-10:30	Is the right ventricular function OK?	Techniques of Right ventricular assessment
10:30-10:50	Fluid assessment	Role of USG
11:00-13:00	Workshop 1	
40 mins	Station 1	Doppler principles
40 mins	Station 2	Assessment of Right ventricular function
40 mins	Station 3	Assessment of Left ventricular diastolic function
13:00-13:45	Lunch	
13:45-15:15	Workshop 2	
30 mins	Station 1	Fluid assessment by Sonography
30 mins	Station 2	Assessment of Left ventricular systolic function- Part 1
30 mins	Station 3	Assessment of Left ventricular systolic function- Part 2
Case based learning- Interactive session with SIMULATOR		
15:15-15:45	Case Scenario - 1	
15:45-16:15	Case Scenario - 2	